

# DPW Bureau of Water & Wastewater

FY 2025-2030 CIP

January 18, 2024



BALTIMORE CITY  
DEPARTMENT OF  
PUBLIC WORKS

# Department of Public Works

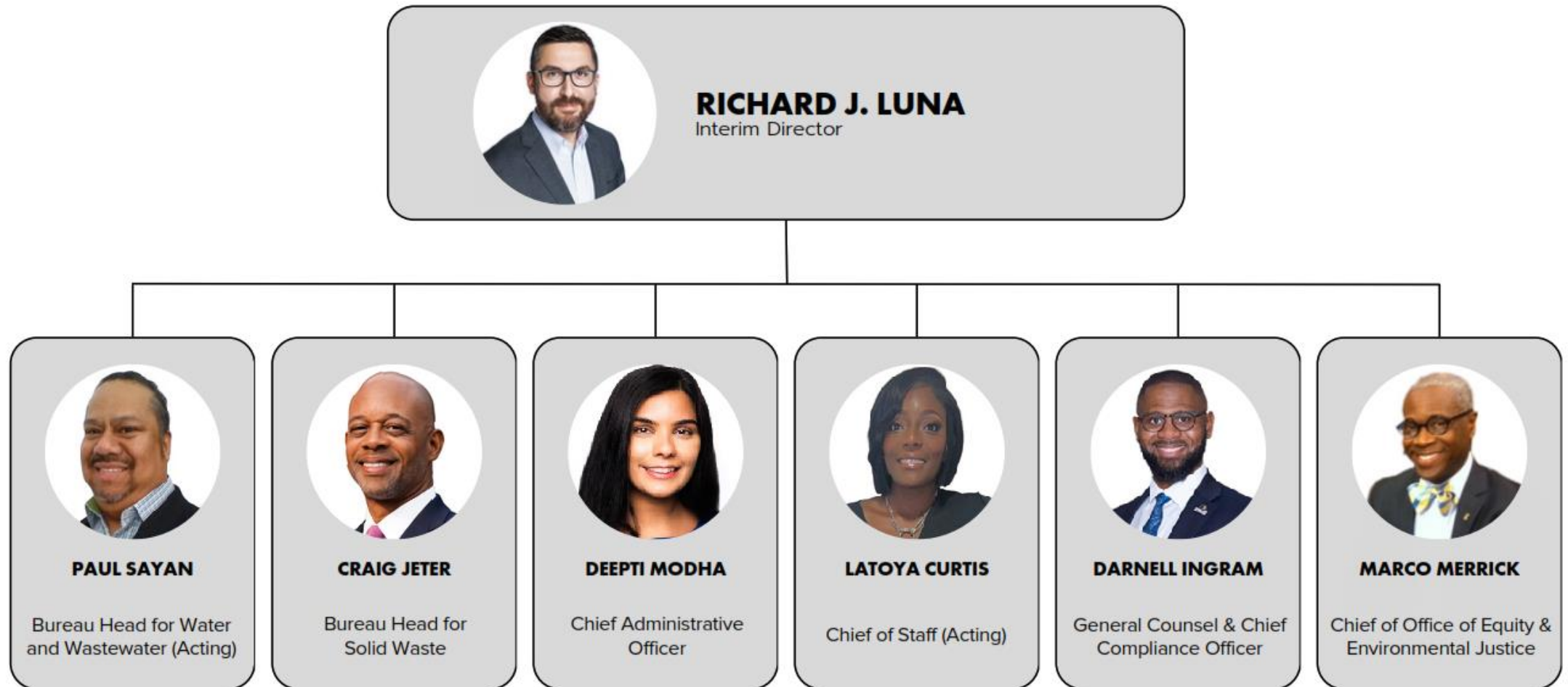
---

**Mission:** We support the health, environment, and economy of the City and region by providing customers with safe drinking water and keeping our neighborhoods and waterways clean.

**Vision:** To be a strong proponent and protector of our environment and the health and vitality of our communities.



# Organization Chart





## Equity in All That We Do

---

Attention to services (provisions, specific needs customers & communities)

Collaboration with DPW Community Liaisons in the Office of Strategic Alliances

Equity initiatives (programs, observances, holidays, celebrations across race, religion, culture, nationality, ethnicity and identities)

Partnerships with Universities, National Water Utility & Environmental Advocacy organizations, City Agencies, Businesses, community and Non-profits

# FY 2024 Operating Budget

DPW’s Fiscal 2024 funding allocation is \$676,846,271.

The breakdown of DPW’s funding across the bureaus is below\*:

DPW Bureaus	FY 24 Funding	%
Bureau of Solid Waste	114,142,068	17%
Bureau of Water & Wastewater	551,882,505	82%
DPW Administration	10,821,698	2%

\*Funding amounts provided by WorkDay which may differ from funding allocations found in Baltimore City’s Fiscal 2024 Ordinance of Estimates due to budget amendments and/or revisions.

# FY 2024 Capital Budget

DPW's Fiscal 2024 funding allocation is \$600,084,000.  
The breakdown of DPW's funding across the bureaus is below:

DPW Bureaus	FY 24 Funding	%
Bureau of Solid Waste	10,750,000	2%
Bureau of Water & Wastewater	589,334,000	98%



# Bureau of Water & Wastewater

# Bureau of Water & Wastewater Assets

## Drinking Water



- Three Reservoirs
- Three Water Filtration Plants
- 20 Finished Water Pumping Stations
- 1 Raw Water Pumping Station
- 3,800 miles of water mains
- 700 miles of public water connections
- 9,100 fire hydrants (City); 13,750 fire hydrants (County)

## Wastewater



- Two Wastewater Treatment Plants
- 1,500 miles of sanitary mains
- 8 major wastewater pumping stations
- 10 minor installations

## Stormwater



- 5 watersheds
- 59 miles of coastline
- 116 miles of streams
- 1,146 miles of storm drain pipes
- 52,438 storm drain inlets
- 27,561 manholes
- 1,709 outfalls

# Waste Water Facilities

0 0.5 1 2 3 Miles



## Legend



Sewer Pump Station



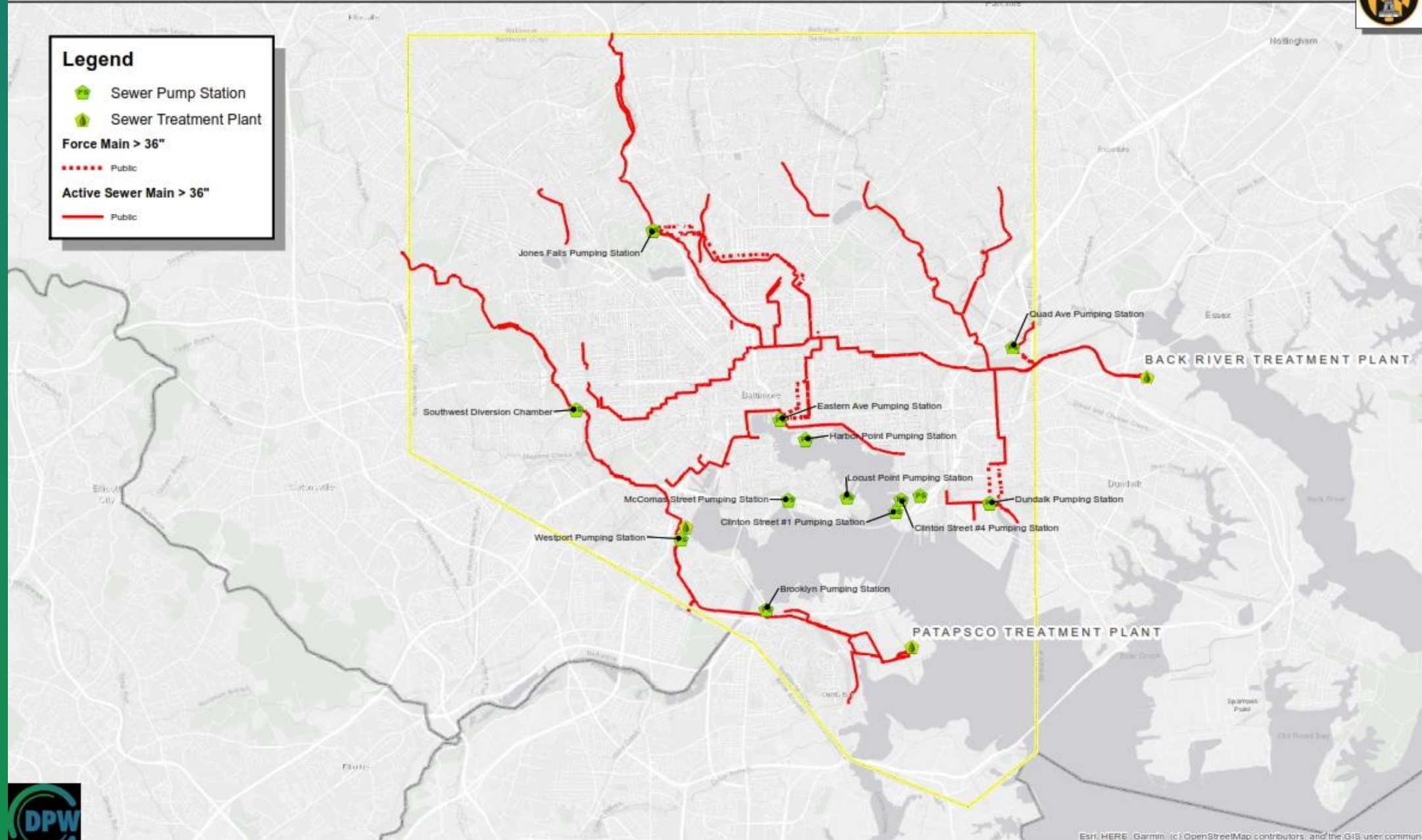
Sewer Treatment Plant

### Force Main > 36"

Public

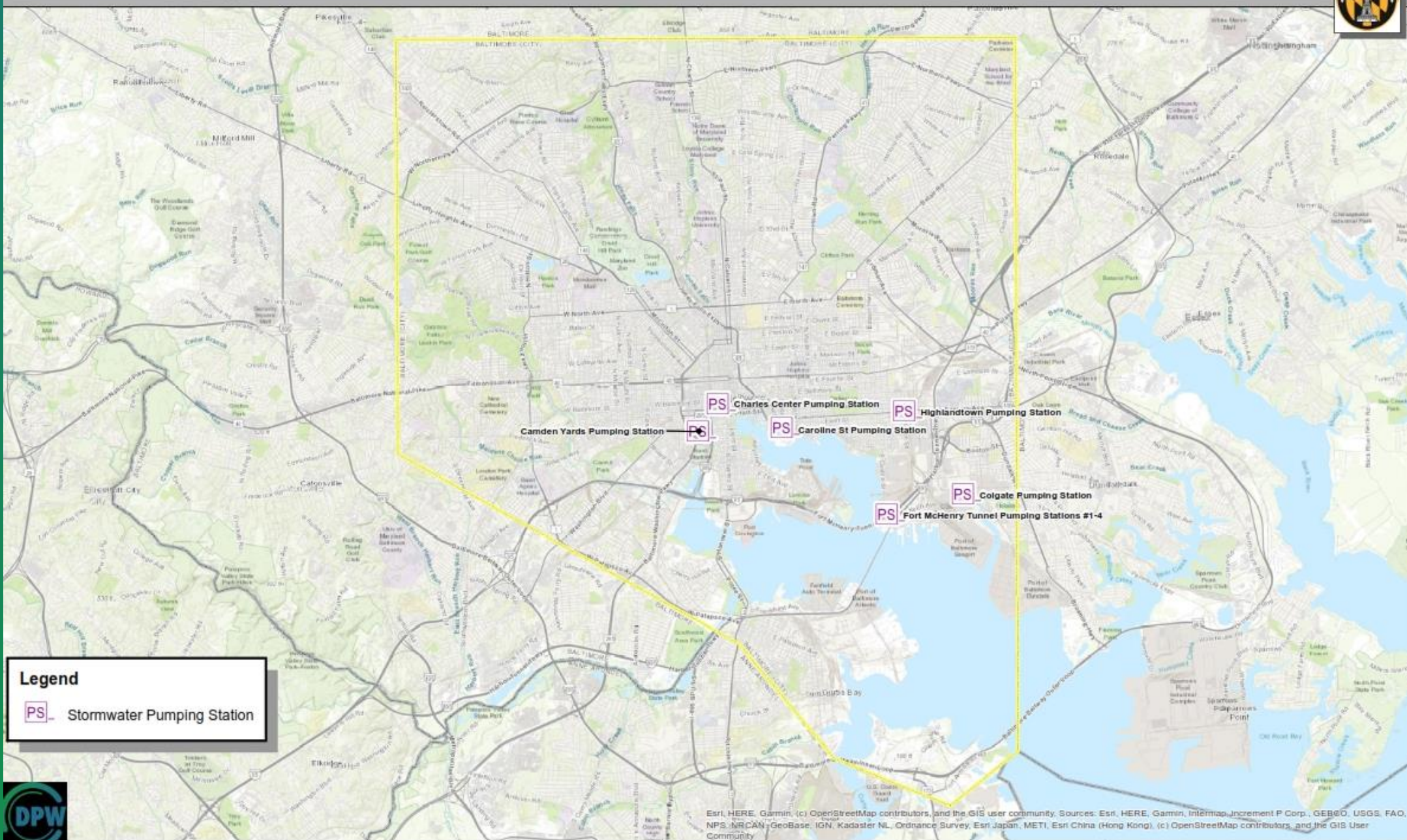
### Active Sewer Main > 36"

Public



# Stormwater Facilities

0 0.5 1 2 3 Miles



## Legend

PS Stormwater Pumping Station

Esri, HERE, Garmin, (c) OpenStreetMap contributors, and the GIS user community. Sources: Esri, HERE, Garmin, Intermap, increment P Corp., GEBCO, USGS, FAO, NPS, NRCAN, GeoBase, IGN, Kadaster NL, Ordnance Survey, Esri Japan, METI, Esri China (Hong Kong), (c) OpenStreetMap contributors, and the GIS User Community

# Water Facilities

0 1.5 3 6 9 Miles



## Legend

- Water Treatment Plant
- Chlorination Plant
- Water Pump Station
- Water Tank

## Reservoir

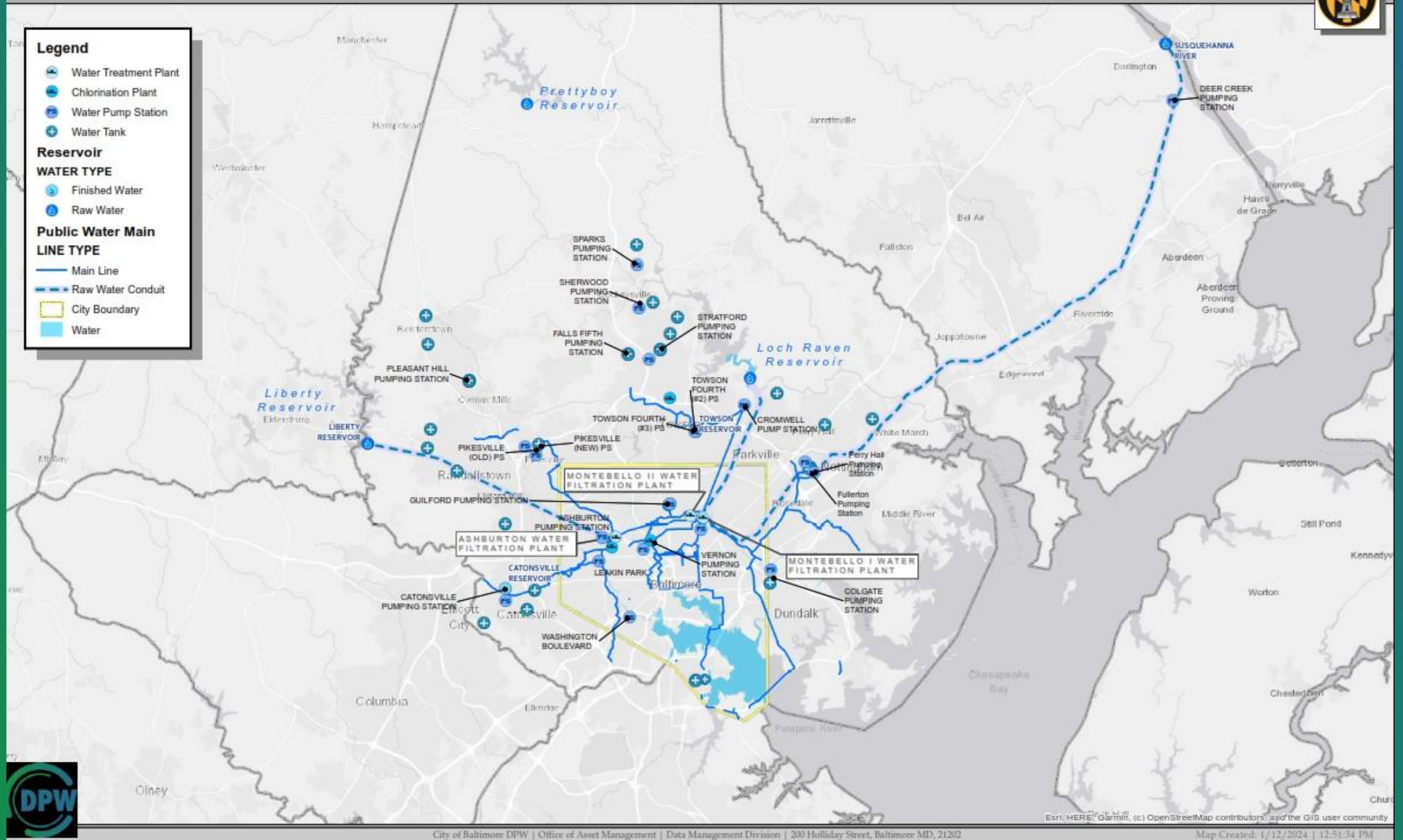
### WATER TYPE

- Finished Water
- Raw Water

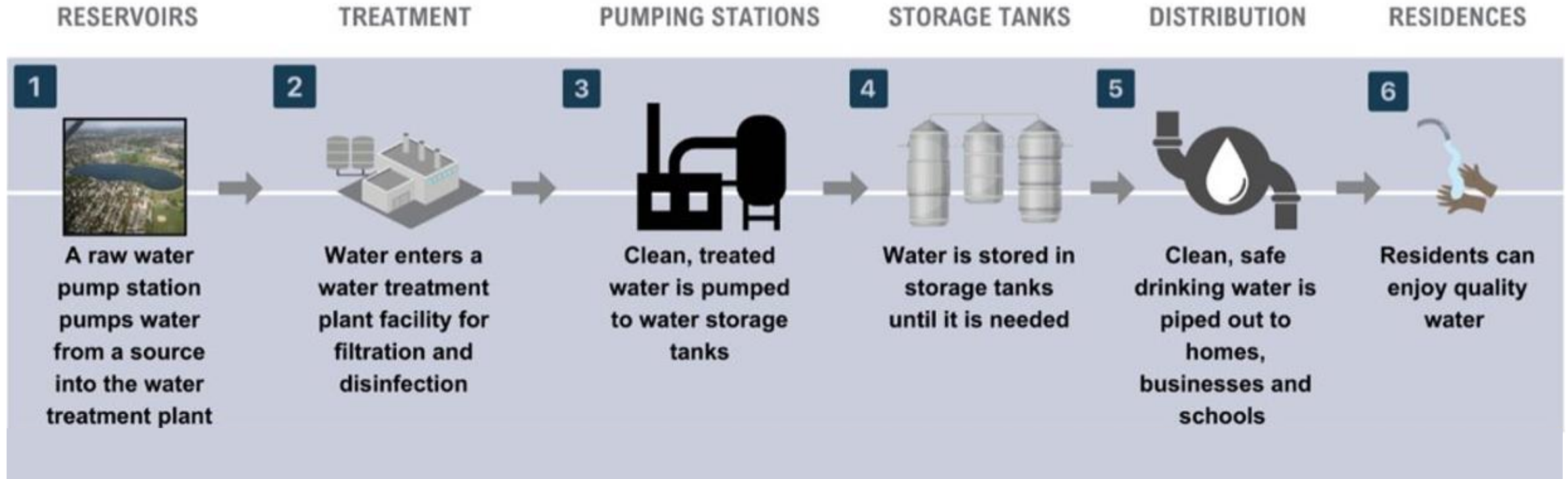
### Public Water Main

#### LINE TYPE

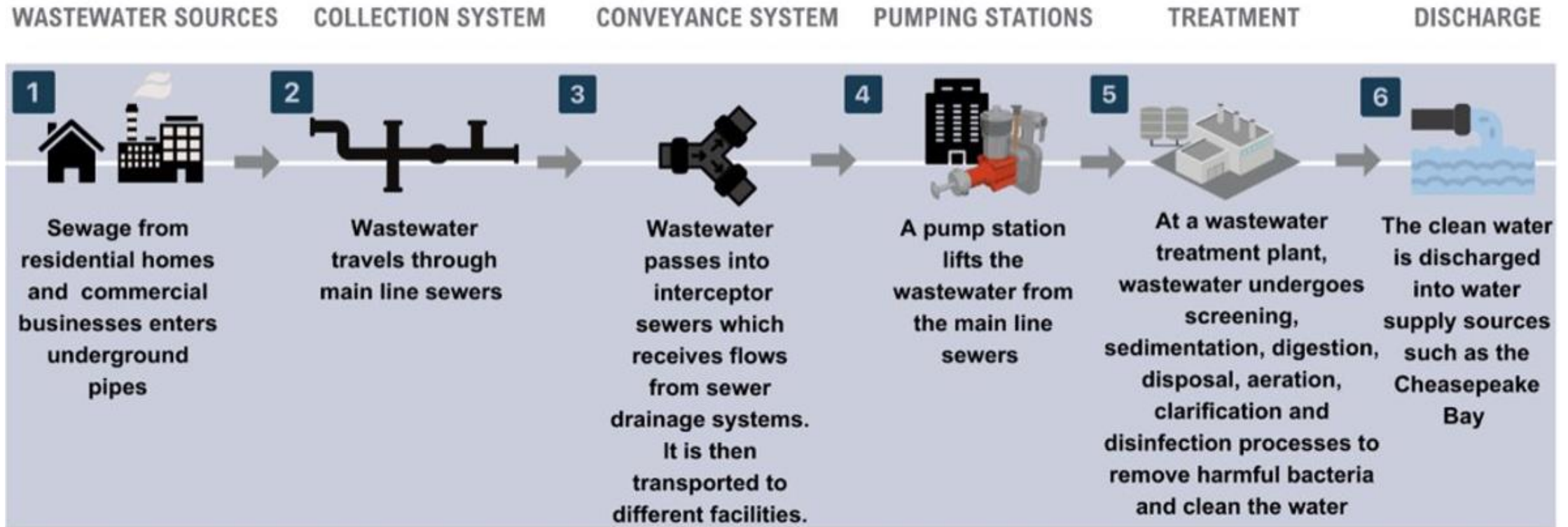
- Main Line
- Raw Water Conduit
- City Boundary
- Water



# Baltimore City Drinking Water System



# Baltimore City Wastewater Treatment System



**FY 2025  
Requests**

**\$ 401 Million**

Fund	Name	Requests (\$ in millions)
9956	Wastewater	141.3
9958	Stormwater	86.2
9960	Water	173.8

**FY 2025-2030  
Requests**

**\$ 2.0 Billion**

Fund	Name	Requests (\$ in millions)
9956	Wastewater	550.0
9958	Stormwater	248.0
9960	Water	1,205.0



# Fund 9956: Wastewater Utility

# FY 2025 Requests (1 of 2)

---

**Total: \$141.3 million**

Title	PRJ #	Request (\$)
SC994 Pat Clarifier Rehabilitation	PRJ000630	52,400,000
SC1018 Sludge Blend Tank Rehabilitation	PRJ000461	37,400,000
SC-993 Jones Falls Pumping Station Capacity Upgrade	PRJ002958	8,000,000
SC 1012 Low Level Sewershed Inflow and Infiltration Reduction - Project 05	PRJ003286	7,200,000
SC TBD Back River Centrate Treatment Facility	PRJ003289	5,300,000
Rainfall and Flow Monitoring Services for the Sanitary Sewer System Phase II	PRJ003151	5,126,000
Patapsco Centrate Treatment Facilities	PRJ002954	4,320,400
Proj 1303.1 Lg Sewers/Intercep	PRJ002220	3,250,000
Proj 1303.2 Lg Sewers/Intercep	PRJ002217	2,570,000
SC 1041 Construction Management Services for Wastewater Collections System	PRJ003145	2,500,000
SC 1036 Sanitary Sewer along Fairfax Road and Westchester Road	PRJ003288	2,478,000

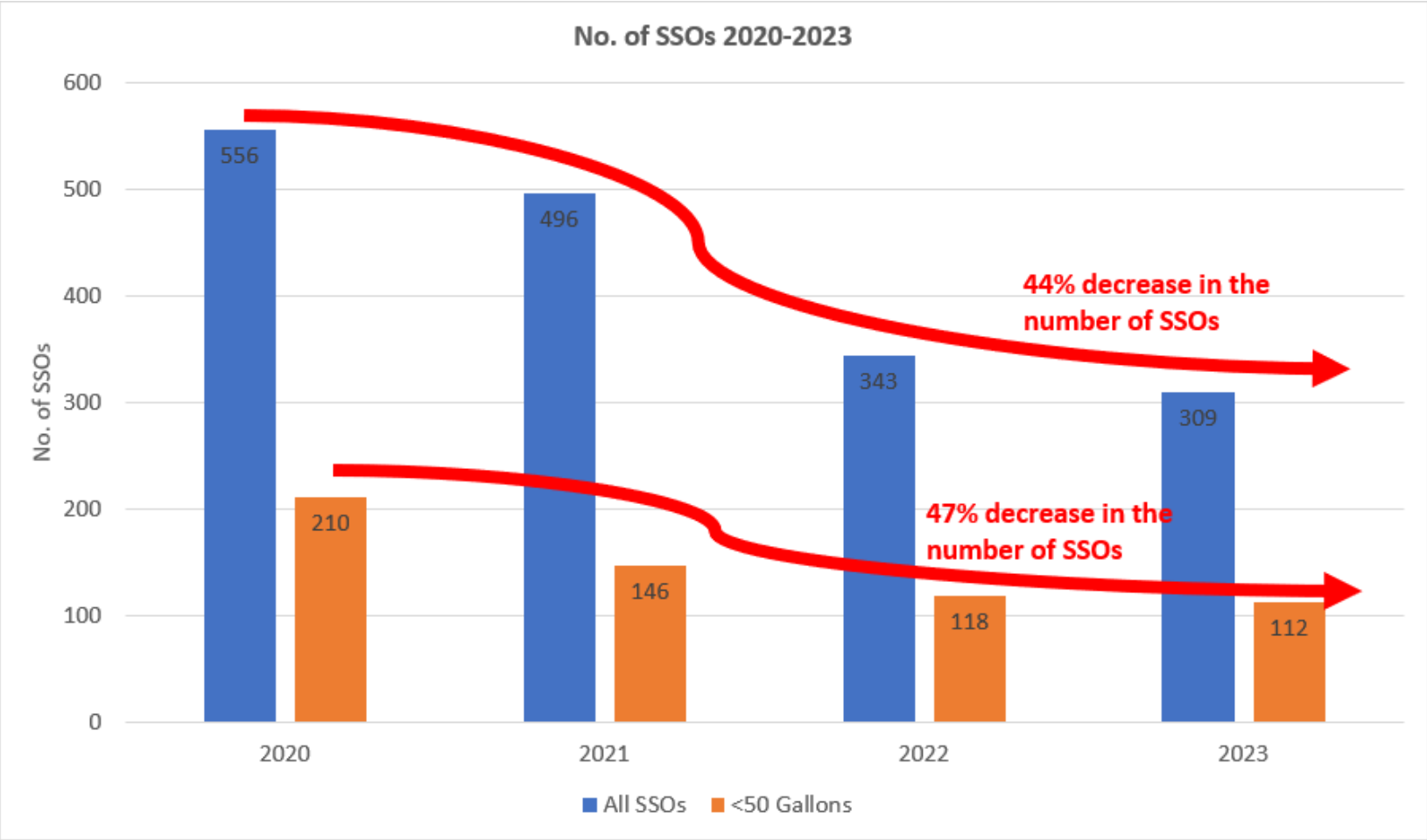
# FY 2025 Requests (2 of 2)

---

**Total: \$141.3 million**

Title	PRJ #	Request (\$)
SC-1032 (Project 1355) Activated Plant 3 Rehab at BRWWTP	PRJ002831	2,200,000
SC982 Eastern Ave Pumping Station	PRJ001426	1,836,000
Jones Falls Sewershed Inflow	PRJ002216	1,500,000
Water Co1326 SCADA and DCS Master	PRJ000744	1,100,000
SC 1010 Low Level Sewershed Inflow and Infiltration Reduction - Project 03	PRJ003285	900,000
SC 1016 Jones Falls Sewershed Inflow and Infiltration Reduction - Project 03	PRJ003287	800,000
SC 1035 Southwest Diversion Improvements Phase II	PRJ003142	703,000
SC949 Rehabilitation Stony Run Pumping	PRJ000922	617,000
SC 1042 Construction Management Services for Wastewater Collection System	PRJ003149	600,000
SC-1031 (Project 1323) Quad Avenue Pump Station Rehabilitation	PRJ002832	500,000

# Recent Accomplishments: Key SSO Volume Reduction



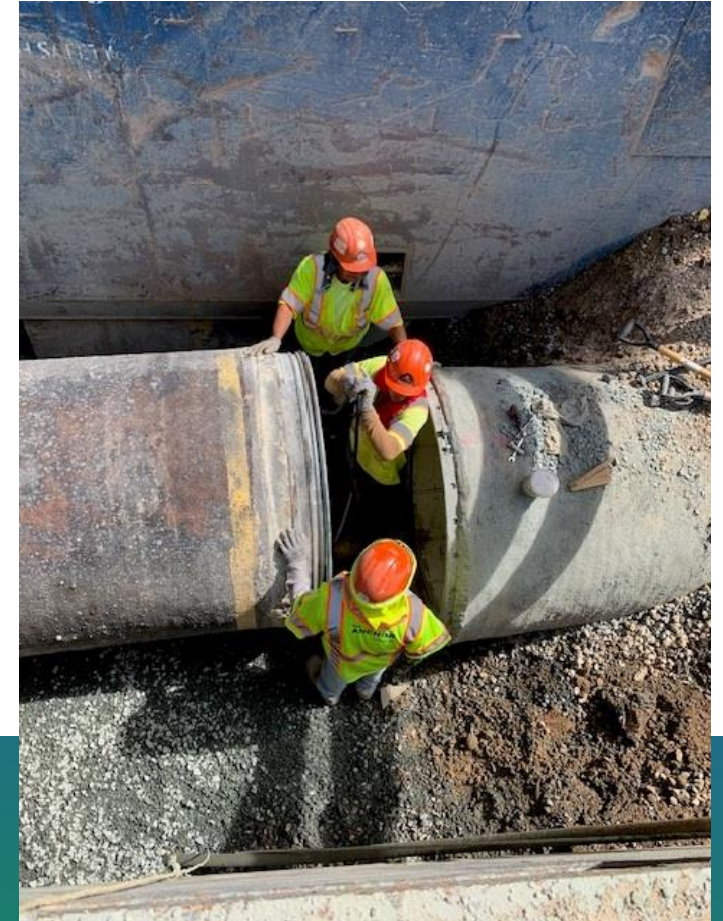
# Recent Accomplishments: SC 941 Jones Falls Sewershed Improvements

---



# Recent Accomplishments: SC 941 Jones Falls Sewershed Improvements

---



# Recent Accomplishments: Wastewater Facilities Construction

---



- SC-882 Enhanced Nutrient Removal @ Back River Project 2, Activated Sludge Plant No. 4  
**Final Acceptance**
- SC-926RR Electrical Distribution System Reliability at Patapsco WWTP  
**70% Complete**
- SC-927 Electrical Distribution System Reliability Improvements at BRWWTP  
**95% Complete**
- SC-954 Primary Settling Tanks Nos. 3&4 Rehabilitation at Back River WWTP  
**80% Complete**
- SC-992R Egg-Shaped Digester Rehabilitation Improvements at Back River WWTP  
**10% Complete**

# Recent Accomplishments: Wastewater Facilities Design

---



- SC-1018 Sludge Blending Tanks Rehabilitation  
**80 % Complete**
- SC-938R Headworks Facilities at Patapsco  
**95 % Complete**
- SC-979 Dundalk Pumping Station Rehabilitation  
**50% Complete**
- SC-982 Eastern Avenue Pumping Station Rehabilitation  
**90% Complete**
- SC-993 Jones Falls Pumping Station Rehabilitation  
**85% Complete**
- SC-994 Clarifiers and Gravity Sludge Thickeners  
**80% Complete**



# Fund 9958: Stormwater Utility

# FY 2025 Requests (1 of 2)

---

**Total: \$86.2 million**

Title	PRJ #	Request (\$)
Middle Branch Resiliency Initiative	PRJ003180	25,000,000
Citywide Stream Restoration	PRJ000904	22,000,000
ER4134 Outfall Stabilization	PRJ002940	10,000,000
SDCTBD- Drainage Repairs and Improvements at various Locations	PRJ002934	7,190,000
MS4 Permit Requirements	PRJ002415	6,000,000
ER 4024 MS4 BMP Monitoring	PRJ002589	5,940,000
SDC 7802 Hillen Road and 35th Street Storm Drain Improvement	PRJ002935	5,000,000
SDC-7773 Gwynns Falls Drainage	PRJ002509	1,050,000
SDC 7806 Drainage Study and Design	PRJ002939	1,000,000
ER-4121   Herring Run 84" Water Main Stream Restoration	PRJ002597	864,000
ESD: Clifton Park - Environmental Restoration Bundle 13   ER-4129 (ER-4084)	PRJ002543	603,774

# FY 2025 Requests (1 of 2)

---

**Total: \$86.2 million**

Title	PRJ #	Request (\$)
ER-4137 Lower Stony Run Reach 3 Repair	PRJ002690	594,000
SDC 7804 2325 East Fort Ave Drainage Improvement Project	PRJ002938	500,000
Stormwater Masterplan	PRJ003270	500,000

# Recent Accomplishments

---

## Cherry Hill Before



## Cherry Hill After





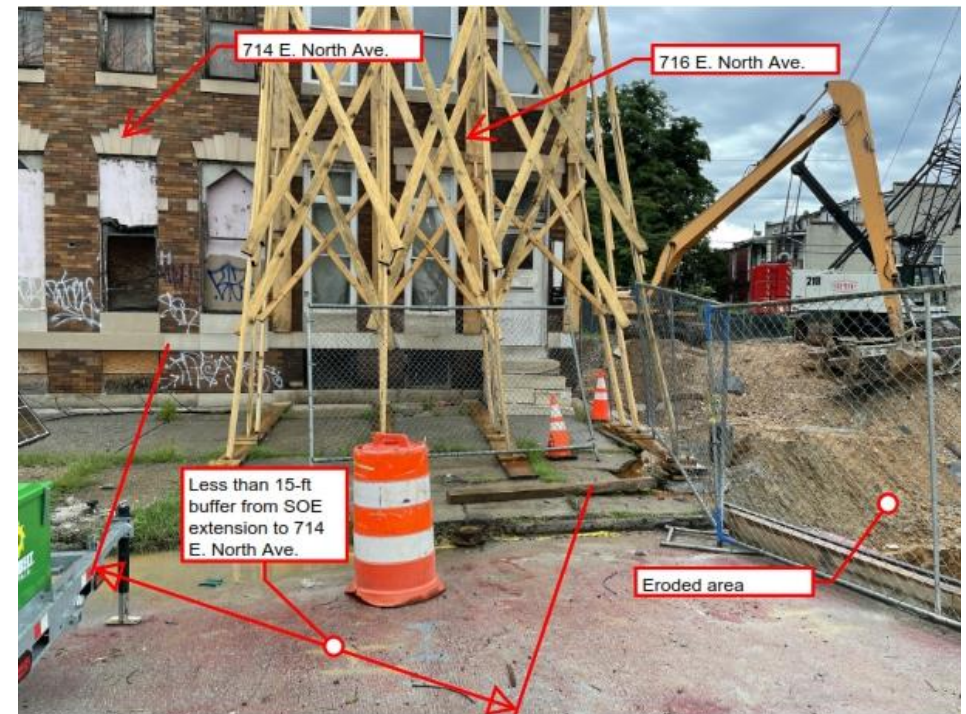
# Recent Accomplishments

## North Ave Sinkhole



E. North Avenue Storm Drain Collapse  
August 11, 2022 - 9:31 AM  
Looking south along eroded storm drain alignment

## Sinkhole Repairs



E. North Avenue Storm Drain Collapse  
August 11, 2022 - 9:15 AM  
Looking north at 716 and 714 E. North Avenue



# Fund 9960: Water Utility

# FY 2025 Requests (1 of 2)

---

**Total: \$173.8 million**

Title	PRJ #	Request (\$)
WC 1243 Cromwell PS Rehabilitation	PRJ001562	43,500,000
TR 15005 Warren Road Bridge	PRJ001687	18,900,000
WC-1431 Water Main Replacement at Various Locations	PRJ002563	17,304,000
Yale Heights Water Main Replac	PRJ002230	14,376,000
WM Replace Reistertown Rd	PRJ000669	13,200,000
WM Barclay and Vicinity	PRJ000694	10,300,000
WC 1382 Montebello Finished	PRJ001333	10,000,000
Montebello Lake Dredging	PRJ000007	8,500,000
WC 1421 Montebello Solar Panel	PRJ002235	7,814,880
WC1349 Madison Street WM	PRJ002223	5,800,000
WC-TBD On-Call Design & Engineering Services	PRJ002569	5,454,000

# FY 2025 Requests (2 of 2)

---

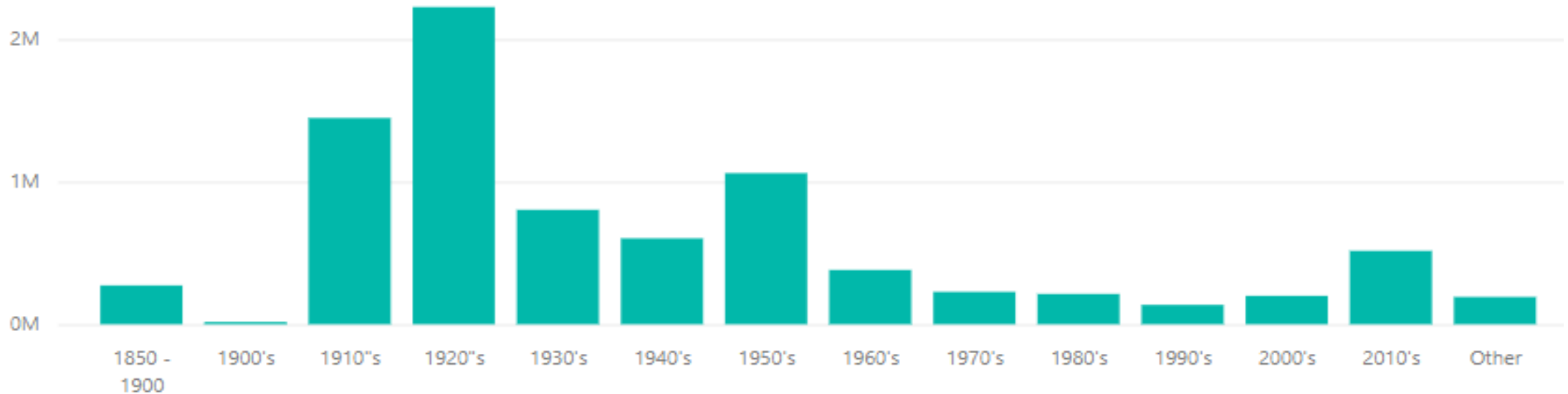
**Total: \$173.8 million**

Title	PRJ #	Request (\$)
WM Fells Point and West Canton	PRJ000874	4,100,000
Watershed Comprehensive Plan	PRJ001475	3,240,000
Water Main Anode Installation	PRJ002966	3,240,000
Urgent Needs Water Facilities	PRJ001395	2,700,000
BC 6520 Prettyboy Bridge Deck	PRJ001105	2,160,000
Watershed Bridge Maintenance	PRJ000191	1,080,000
Building Improvement Liberty Dam	PRJ000969	540,000
WC1219 Lab Facility Montebello	PRJ001194	540,000
BC 6503 Loch Raven Road over Minebank Run	PRJ003224	540,000
Mount St Water Main Replace	PRJ002225	281,000
Liberty Reservoir Dam Crest	PRJ001943	216,000

# Long-Term Needs

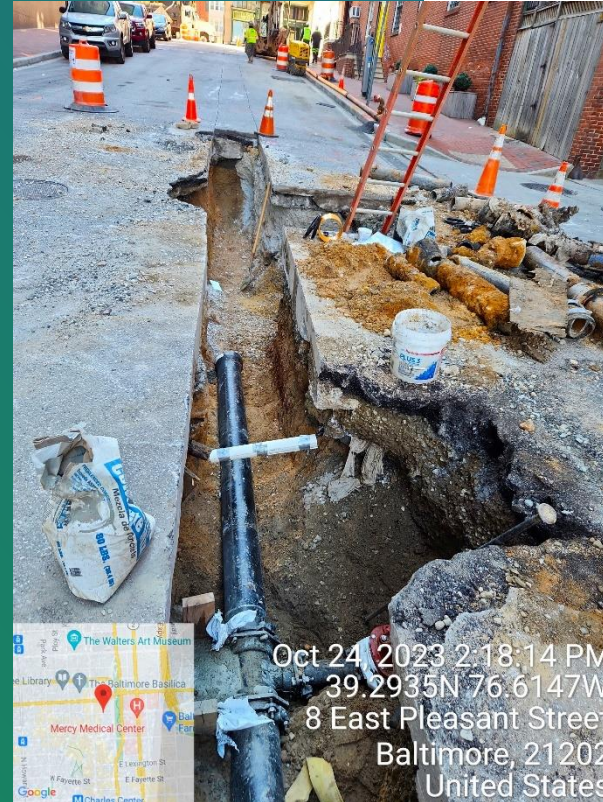
Average Age of Water Main Assets Approximately 80 Years

Water Main Installation by Decade



Length of Active Baltimore City Water Mains Installed by Decade Average Age is Approximately 80 Years Old; information courtesy of the DPW Office of Asset Management

# Water Utility Recent Accomplishments



## Water Main Replacement Program

FY 2023: 16.72 miles

FY 2024: 7.12 miles as of 12/2023

### Interagency Coordination:

- Established bi-weekly meetings with various DOT sections for on-going construction projects coordination
- Monthly meetings with DOT for design projects coordination

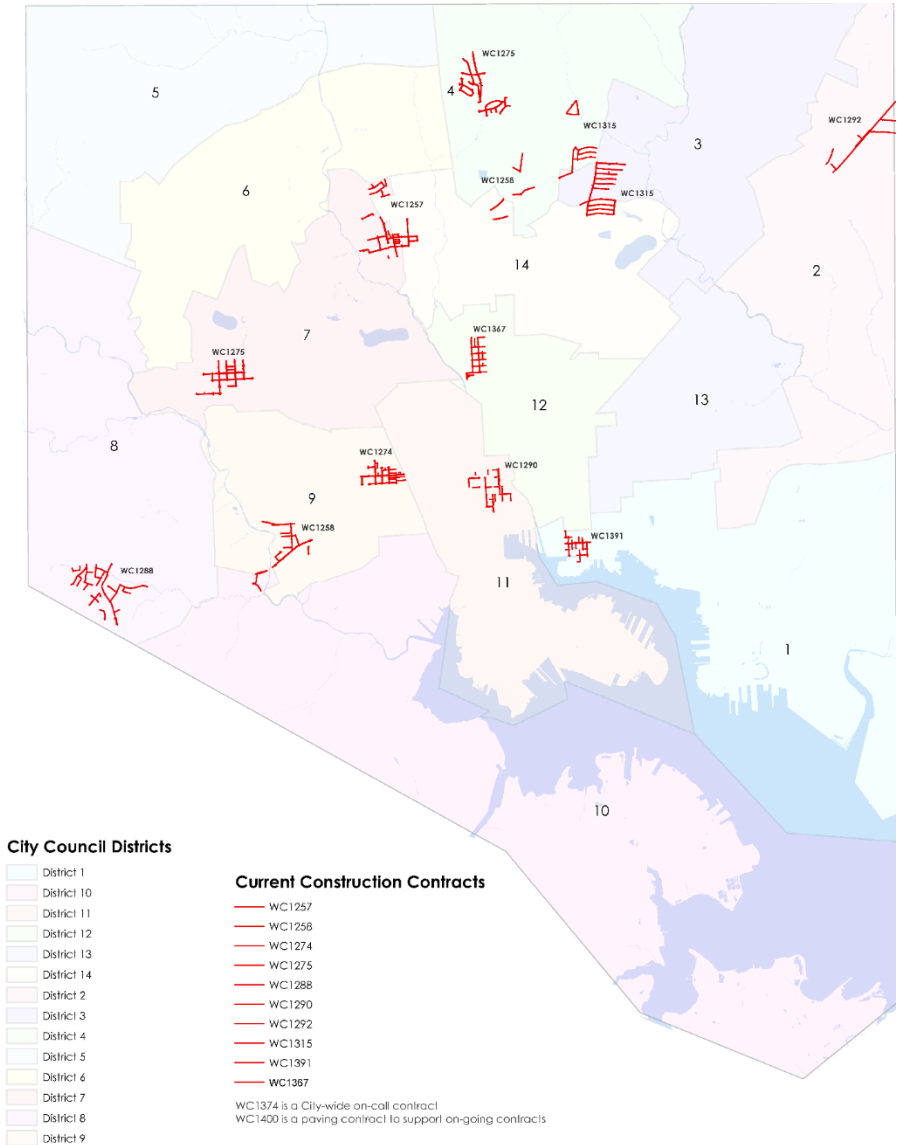
# Water Utility Recent Accomplishments



Nov 15, 2023 1:10:41 PM  
Baltimore  
Maryland



Friday, December 29, 2023 12:23:41  
21 East 25th Street

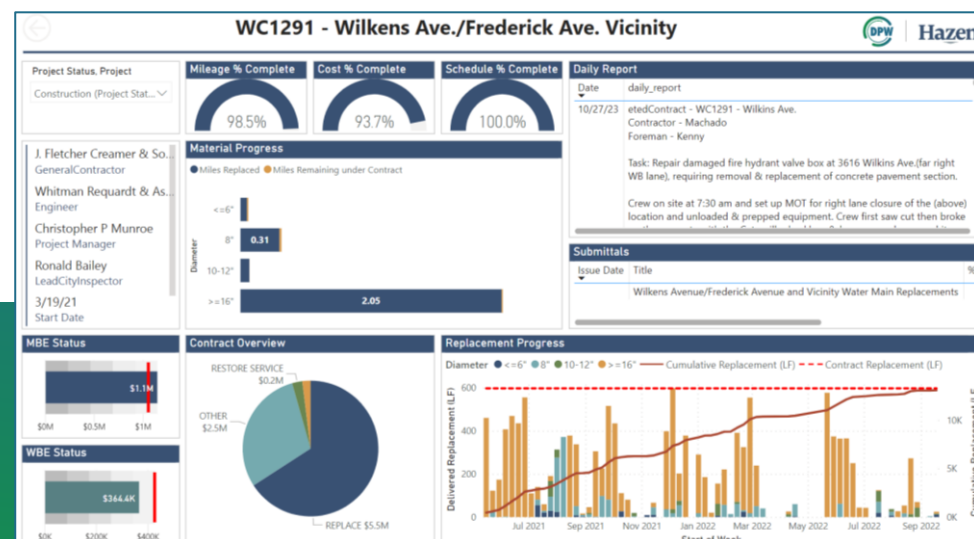
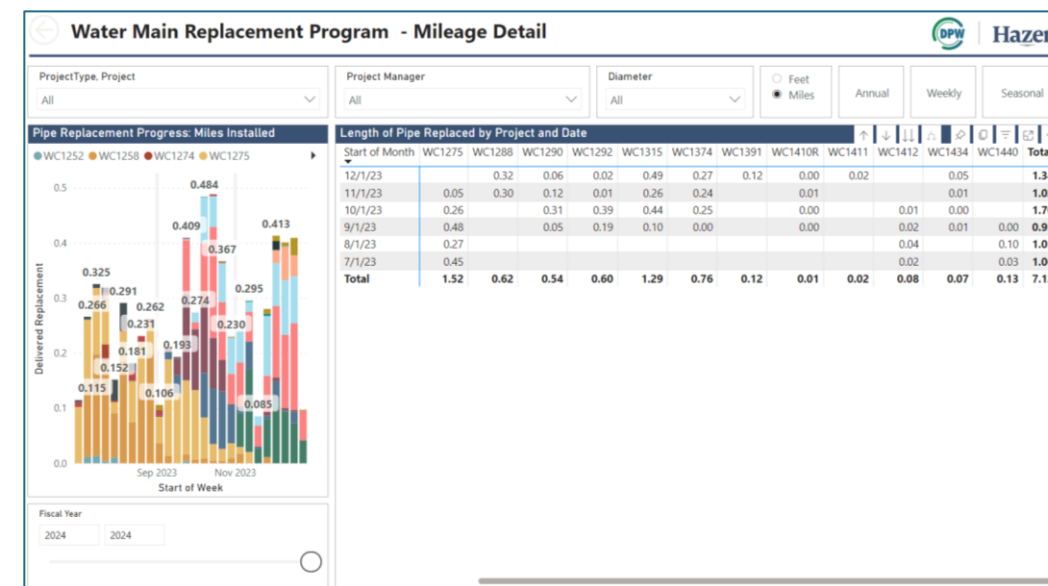
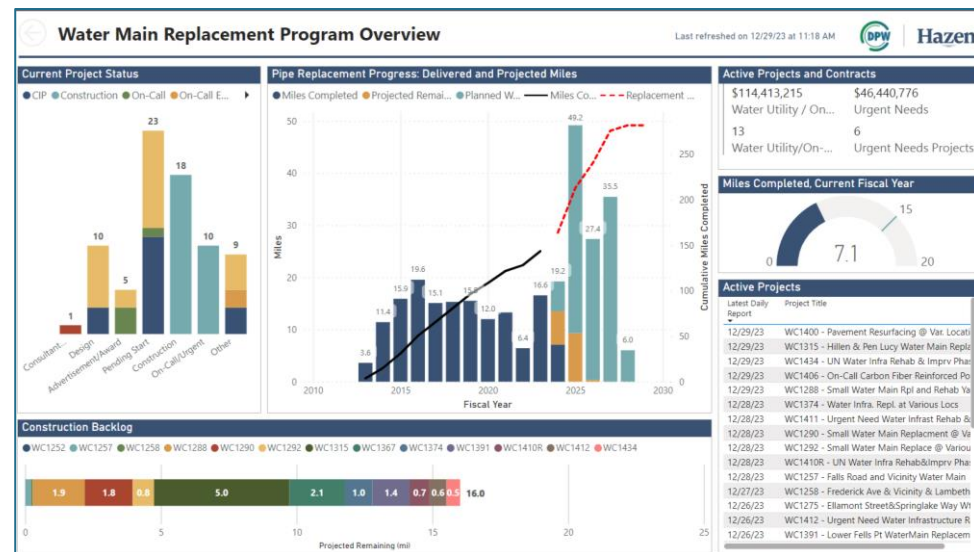


Water Main Replacement Contracts



January 2024

# Dynamic Reports Using Real-time Data Dashboards



# Water Facility Recent Accomplishments:

## WC 1211 Ashburton Reservoir Zone 2 Tanks



# Water Facility Recent Accomplishments:

## WC 1204 Druid Lake Finished Water Tanks





# Recent Accomplishments: Water Facilities Construction

---

- WC 1120 Guilford PS Rehabilitation  
**93 % Complete**
- WC 1160 Montebello 2 Finished Water Reservoir Cover  
**99 % Complete**
- WC 1204 Druid Lake Finished Water Tanks  
**95 % Complete \***
- WC 1211 Ashburton Reservoir Zone 3 Tanks  
**90 % Complete \***
- WC 1328 Montebello 1 Infrastructure Improvements  
**100 % Complete**

**\* In compliance with EPA and Tanks in Service**

# Recent Accomplishments: Water Facilities Design

---



- WC 1382 Montebello 1 Finished Water Reservoir  
**76 % Complete**
- WC 1199 Ashburton PS Improvement  
**91 % Complete**
- WC 1377 Ashburton Low lift Pump Station  
**30% Design start**
- WC 1420 Montebello 1 filter upgrade (Project 1338)  
**30% Design start**



# Policy Issues & Partnerships

# Partnerships



A collaboration between Baltimore City and Baltimore County to identify the material of the water service line to your home.

---

# Partnerships

## WHAT DO I NEED TO DO?

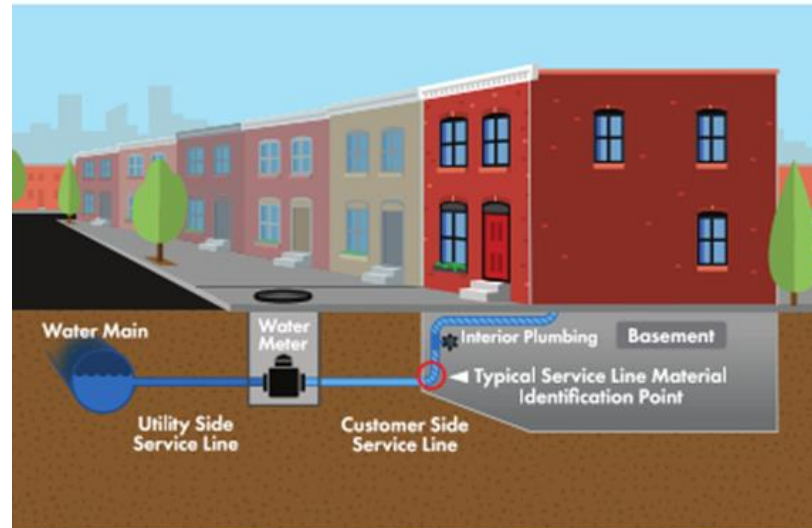
**Step 1.** Scan the QR code or follow the URL.

**Step 2.** Enter or find your address on the map.

**Step 3.** If a **blue** dot appears, please complete the **5-minute** survey.



<https://bit.ly/SLMaterialSurvey>



You will need these tools to identify your service line material.



Key



Magnet



Coins

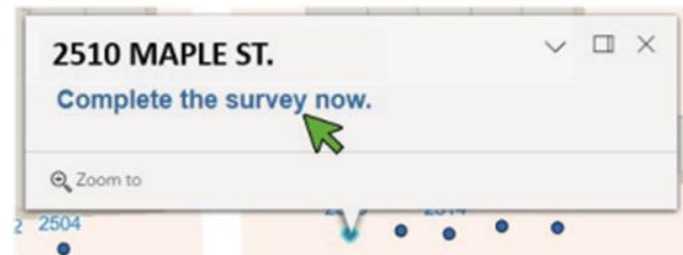


Cell Phone or Camera



Flashlight

We appreciate your support in getting others to complete the survey. Please speak with your neighbors and relatives to share program information and assist those who may need help finding their service line or completing the survey.



## Partnerships

1. Type your address into the search bar and select your address from the drop-down menu or press the magnifying glass icon. The map will zoom into the area associated with your address.
2. Identify your residence by selecting the icon labelled with your address number.
3. Once you click the dot, a box will appear with your address, and a clickable link "Complete the survey now."

A decorative graphic on the left side of the slide consists of several concentric, thick arcs in shades of green and teal, partially forming a circle around the central text.

# Questions?



B A L T I M O R E C I T Y  
**DEPARTMENT OF  
PUBLIC WORKS**